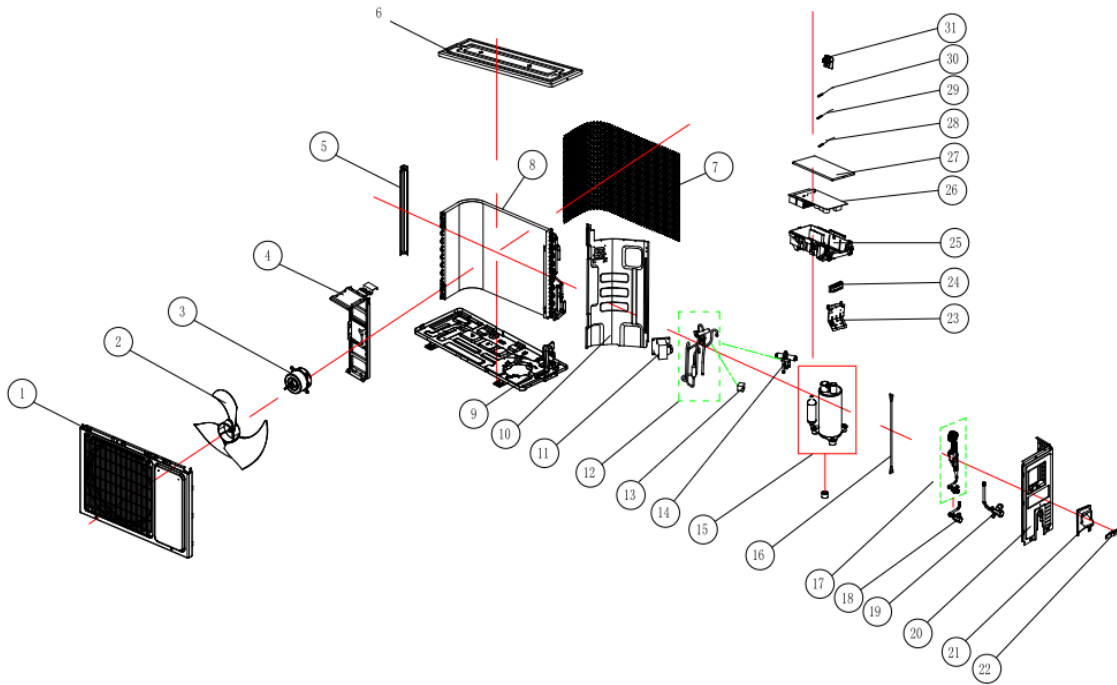


**GENERALLUX STAR Mini split Heat Pump Inverter, OUTDOOR UNIT, Parts Diagram**

**Outdoor Unit Model:** AST-18UW3SBBTU00

**Nominal capacity:** 18000BTU

**Power supply:** 208-230V, 1 Ph, 60 Hz



SR	PART CODE	DESCRIPTION
2	1841783	propeller fan blade
3	1859837	DC motor
8	1967761	Condenser assembly
9	1841349	base holder part
11	1205797	PFC inductance
12	1888252	4-way valve assembly
13	1511783	Four-way valve coil
14	1408045	4-way valve
15	1850482	Inverter compressor
16	1847142	Strong electricity connect wire
17	1854774	Capillary assembly
18	1844583	1/4 2-way valve
19	1844499	1/2 3-way valve
21	1854040	wiring distribution cover assy
23	1842392	connecting board
24	1852124	Wire terminal board
25	1841985	electric box
26	1854367	Controller Component
27	1546706	electric box cover
28	1511780	Temperature sensor
29	1511782	Temperature sensor
30	1831029	Temperature sensor
31	1546721	sensor mounting plate