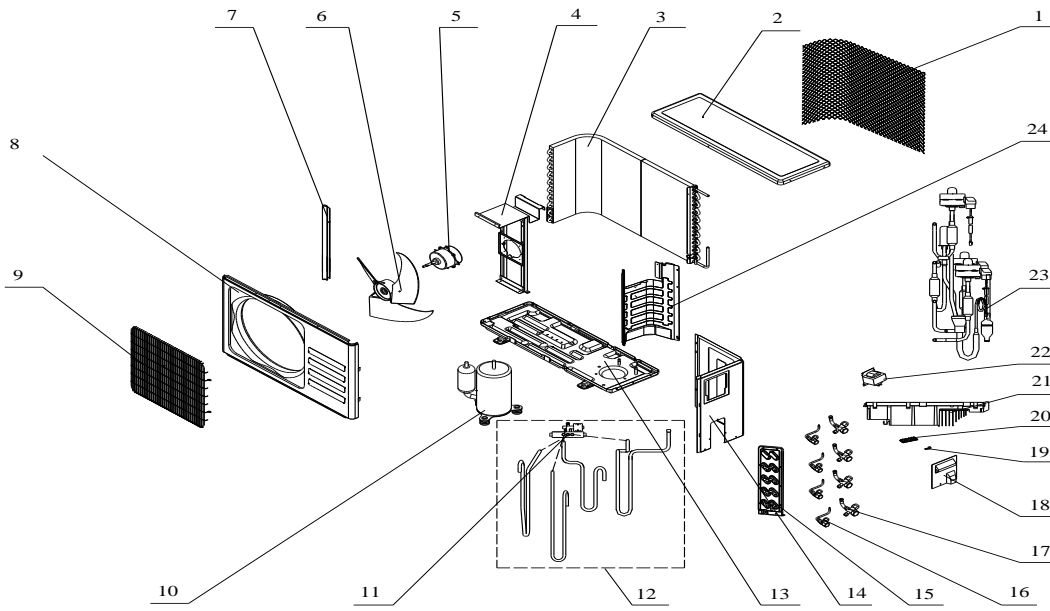


**GENERALLUX Mini split Heat Pump Inverter, OUTDOOR UNIT, Multizone. Parts Diagram**

**Outdoor Unit Model: TUM-GL-27HA2/03-ES**

**Nominal capacity: 27000BTU**

**Power supply: 208-230V, 1 Ph, 60 Hz**



No.	Part No.	Part Name
1	42011-000166	Grille
2	41207-000016	Top cover
3	92011-005997	Condenser
4	41203-000030	Outdoor motor supporter
5	22001-000120	Outdoor motor
6	42004-000091	Propeller fan
7	41205-000125	Left grille supporter
8	41206-000046	Front plate
9	42011-000031	Fan guard
10	92014-000474	Compressor and accessories
11	92008-000207	4-way valve
12	92007-006939	4-way valve assembly
13	41202-000401	Base
14	41205-000208	Right plate
15	92008-000051	Two-way valve
16	41204-000071	Valve supporter
17	92008-000146	Three-way valve
18	41211-000110	Electrical box cover
19	42001-000036	Cable clamp
20	11304-100097	Terminal
	11304-100029	Terminal
21	31201-002004	Outdoor PCB assembly
22	22011-000004	Inductor
23	92007-006923	Electronic expand valve
24	41208-000219	Partition plate
25	10104-100121	Temp sensore assembly (Pipe Temp. sensor , outdoor Temp. sensor,Discharge Temp. sensor , Suction Temp. sensor)