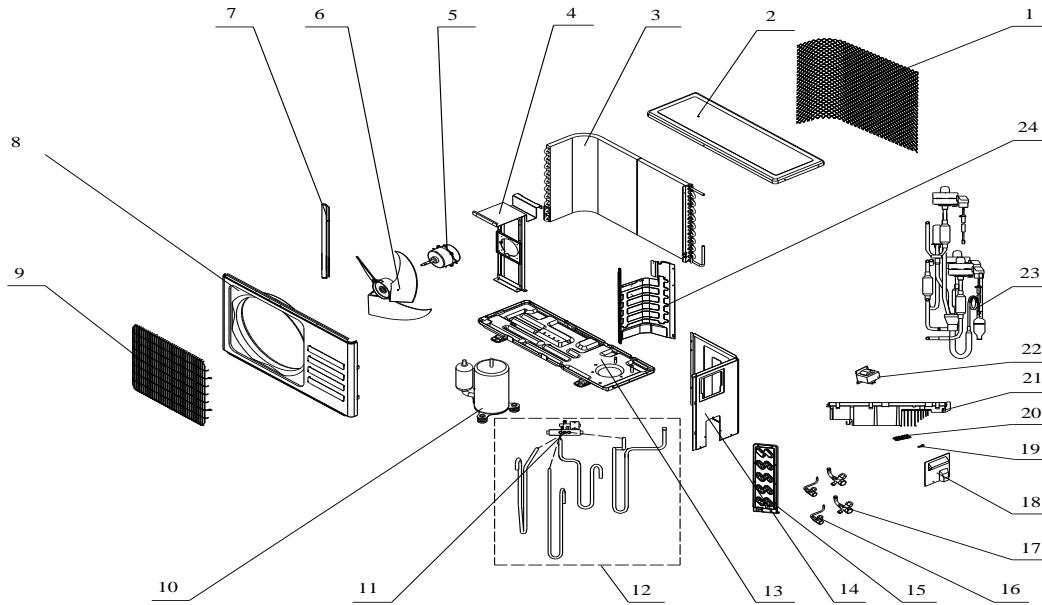


GENERALLUX Mini split Heat Pump Inverter, OUTDOOR UNIT, Multizone. Parts Diagram

Outdoor Unit Model: TUM-GL-18HA2/02-ES

Nominal capacity: 18000BTU

Power supply: 208-230V, 1 Ph, 60 Hz



No.	Part No.	Part Name
1	42011-000188	Grille
2	41207-000028	Top cover
3	92011-005404	Condenser
4	41203-000046	Outdoor motor supporter
5	22001-000120	Outdoor motor
6	42004-000105	Propeller fan
7	41205-000135	Left grille supporter
8	41206-000058	Front plate
9	42011-000039	Fan guard
10	92014-000318	Compressor and accessories
11	92008-000209	4-way valve
12	92007-006853	4-way valve assembly
13	41202-000371	Base
14	41205-000207	Right plate
15	41204-000069	Valve supporter
16	92008-000051	Two-way valve
17	92008-000146	Three-way valve
18	41211-000110	Electrical box cover
19	42001-000036	Cable clamp
20	11304-100097	Terminal
	11304-100029	Terminal
21	31201-002002	Outdoor PCB assembly
22	22011-000004	Inductor
23	92007-006902	Electronic expand valve assembly
24	41208-000152	Partition plate
25	10104-100120	sensor assenbly