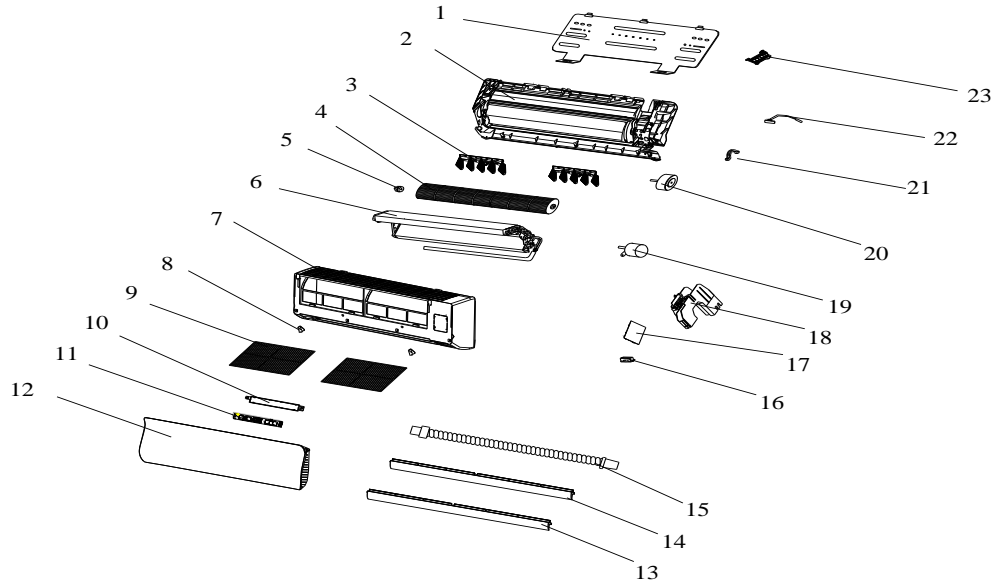


**GENERALLUX Mini split Heat Pump Inverter, INDOOR UNIT, Parts Diagram**

**Outdoor Unit Model: TSC-GL24HA1I2TI18**

**Nominal capacity: 24000BTU**

**Power supply: 208-230V, 1 Ph, 60 Hz**



No.	New Part No.	Part Name
1	41109-000028	Installation Plate
2	41199-002746	Base
3	41101-000035	Vertical Vane Assembly
4	42004-000042	Cross Fan
5	42007-000001	Bearing Mount
6	92011-003138	Evaporator
7	41106-002275	Face Frame
8	41108-000066	Screw Cover
9	42008-000053	Air Filter
10	42003-000001	Display PCB Box
11	31102-000085	Display PCB
12	41106-002003	Front Panel
13	41103-000139	Up Vane
14	41103-000137	Down Vane
15	42009-000004	Drainage Hose
16	42001-000103	Cable Clamp
17	31101-000280_UM	Main PCB
18	41105-000139	Electrical Box
19	22001-000357	Vane Motor
	22001-000362	Vertical Motor
20	22001-000240_UM	Indoor Motor
21	41108-000006	Indoor Motor Cover
22	10104-100022	Indoor Sensor Assembly
23	41101-000233	In And Out Pipe Fixer
24	22013-001510	Remote Controller
25	32001-000057	WIFI Assembly